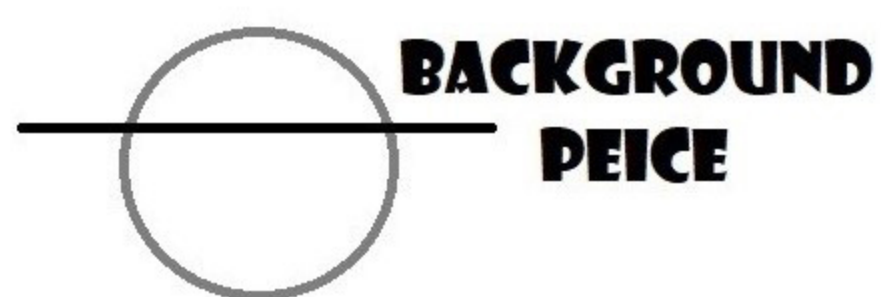


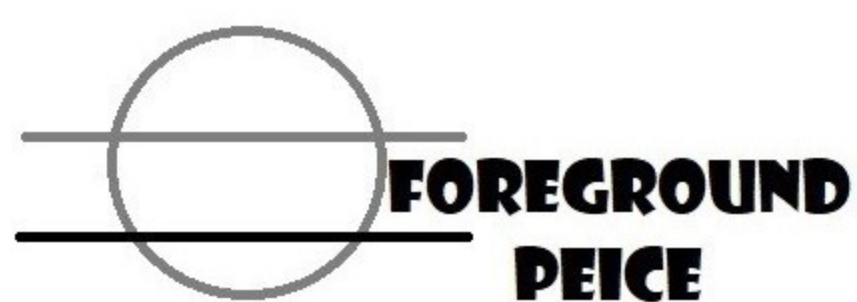
**TOP VIEW:
HOW TO BUILD**



**BASE
LOOP**



**BACKGROUND
PEICE**



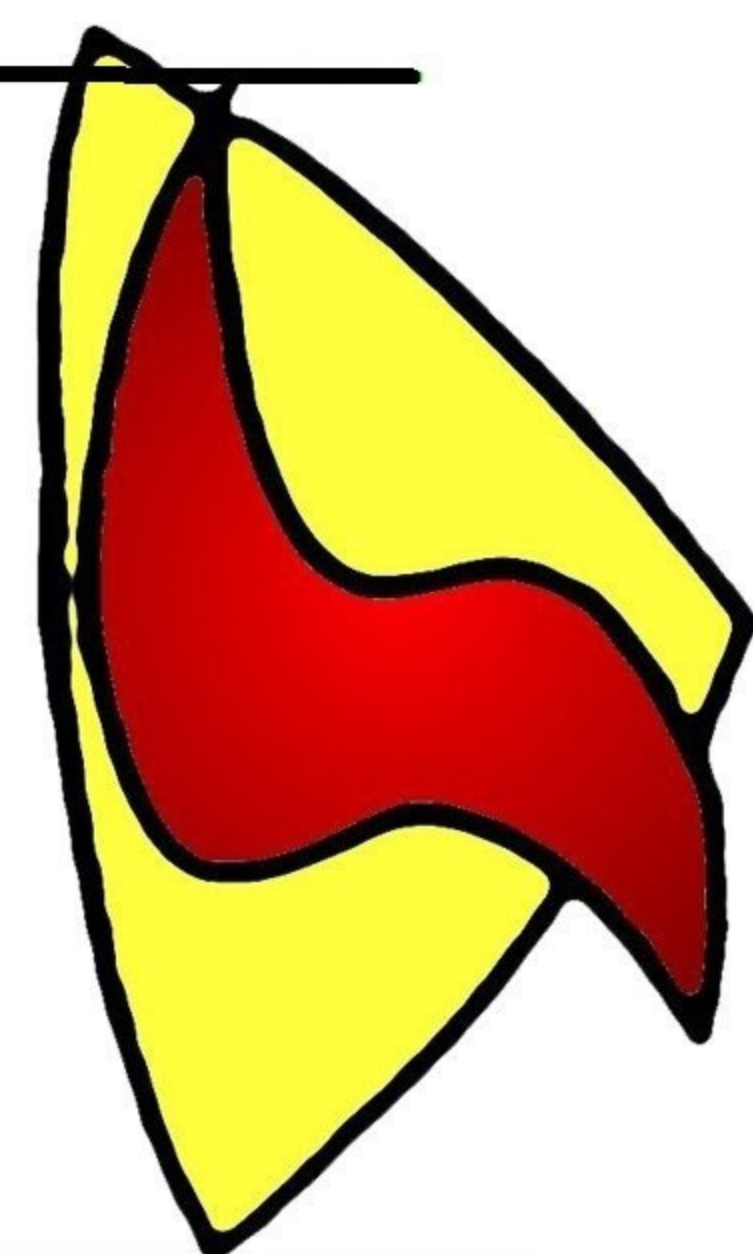
**FOREGROUND
PEICE**



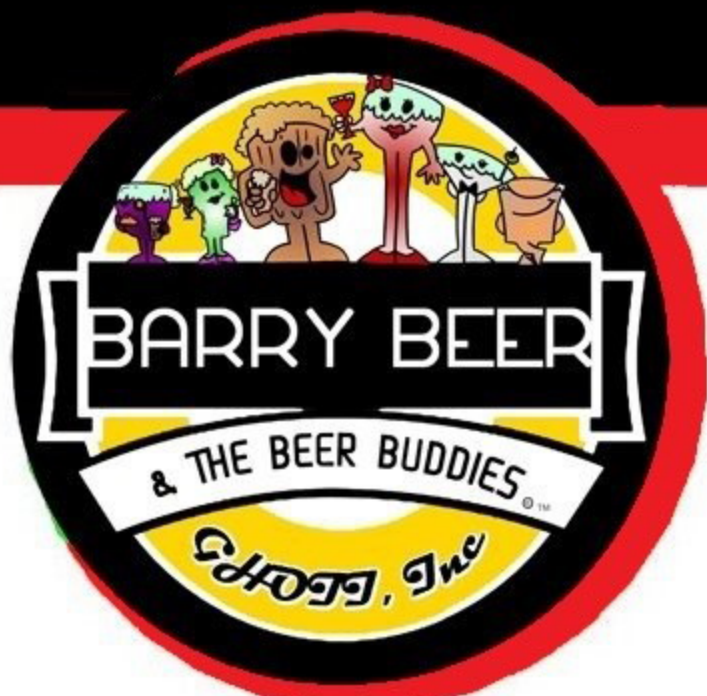
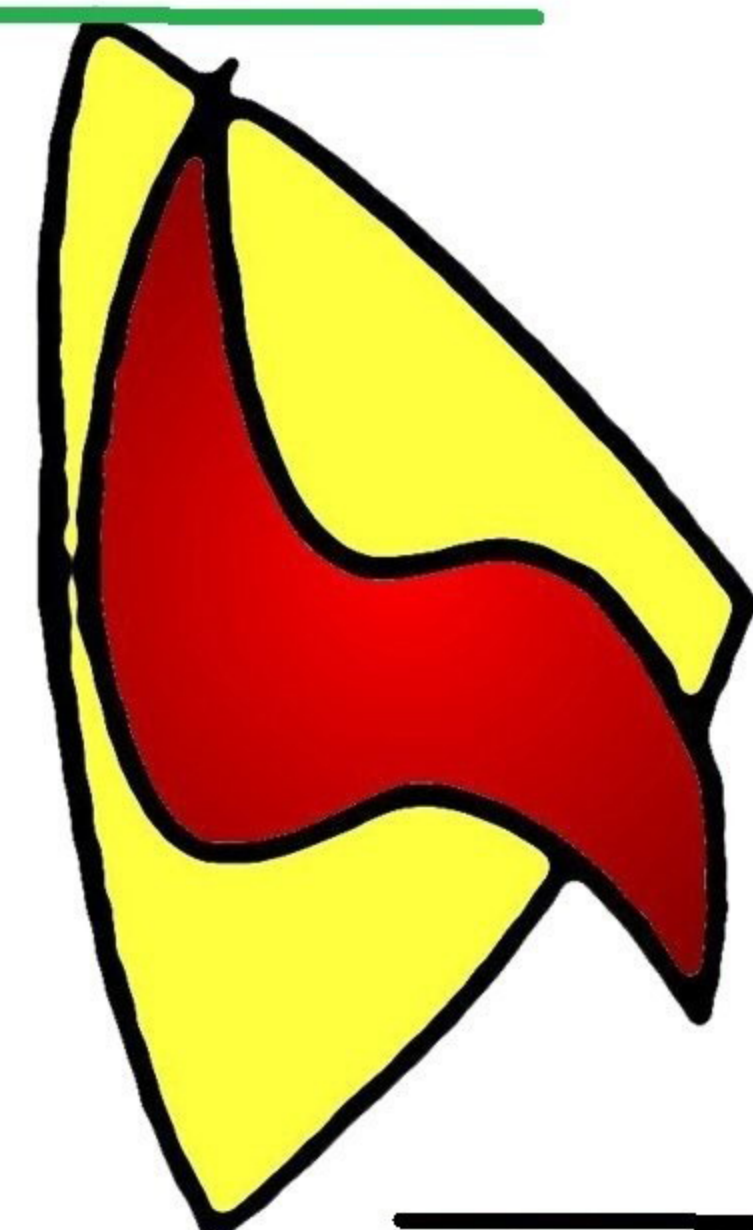
INSTRUCTIONS:
CUT OUT THE PEICES WITH
SCISSORS. THERE ARE ALSO
SLOTS IN EACH PEICE TO CUT
AS WELL SO THAT THEY CAN
ALL SLOT TOGETHER.

LOOP THE BASE INTO AN "O"
SHAPE & FIT THE OTHER
PEICES INTO IT WITH THE
BACKGROUND IN THE REAR &
THE FOREGROUND UP
FRONT. JUST MAKE SURE THE
PEICE SLOT COLOURS MATCH
THE ONES IN THE BASE.

PRINT ON A4 CARD STOCK



Super Beer



SUPERBEER PAPERCRAFT